

A NEW FORM
FOR INSPIRATION

AAA OFFICE AND
RETAIL OPPORTUNITIES

X
Y
Z
O
THE

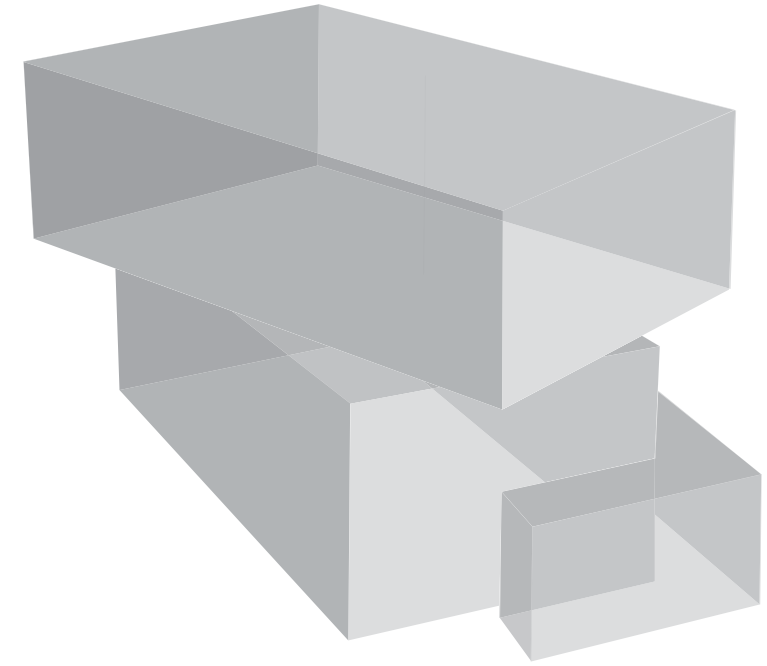
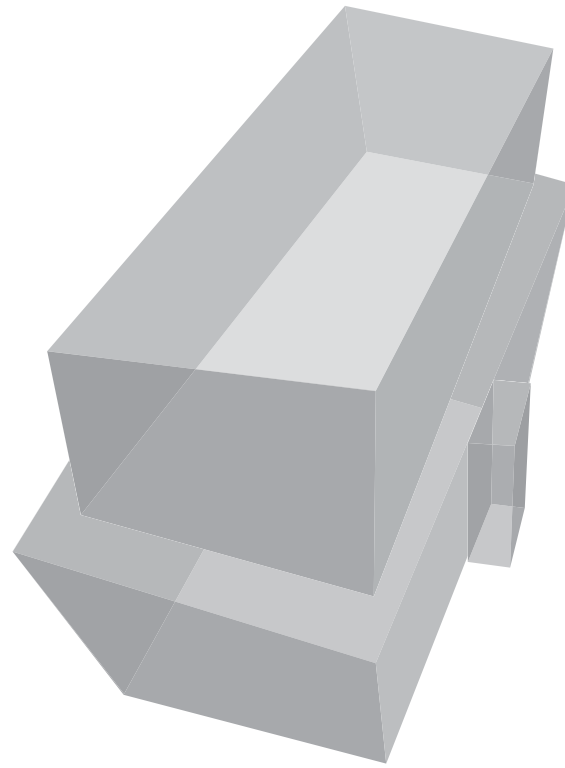
ENTRAL

AN ICON FOR
THE TERMINAL
DISTRICT

With its 14-storeys of sculptural innovation, The Onyx is designed to be one of the most high-performance, talked-about commercial and retail structure in the city. The Terminal District's time is upon us, concentrating every conceivable next-gen industry inside one central, diverse, hyper-connected hub in the False Creek Flats.

It begins as a simple layered form, strong in character and striking in its balance of light and dark. With a translucent, shimmering black exterior—like the gemstone it takes its name from—The Onyx’s interior spaces, by careful contrast, draw in sunlight and radiate warmth. Examine it more

closely and see how its framework spirals skyward. The structure genuflects around and away from the SkyTrain rails, infusing itself with energy. In every way, this artful design shows a deep appreciation for the ways this neighbourhood moves and the progressive spirit it represents.



Architecture For A New Age

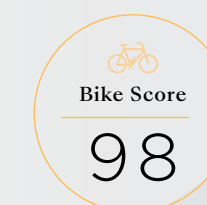
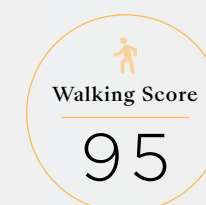
A MASTERSTROKE
TO INSPIRE THIS
CITY'S THINKERS,
SHAPERS AND DOERS

At the Centre of it all

The Terminal District is a locational kingpin. It borders essential, eclectic neighbourhoods on all four sides, with SkyTrain, bus routes and key thoroughfares deepening its reach into the region. Its convenience and vibrancy make it feel like an extension of Downtown; its livability and wise

planning make it feel visionary on a global scale. Current and upcoming neighbours are a testament to its appeal. This area is poised to be the home of big thinkers across a range of disciplines, transforming this already cool, arterial locale into the future-forward heart of the city.

STRATHCONA
OLYMPIC VILLAGE
CHINATOWN
MOUNT PLEASANT
DOWNTOWN
FALSE CREEK



NEW EMILY CARR UNIVERSITY
OF ART & DESIGN

FOOD & DRINK

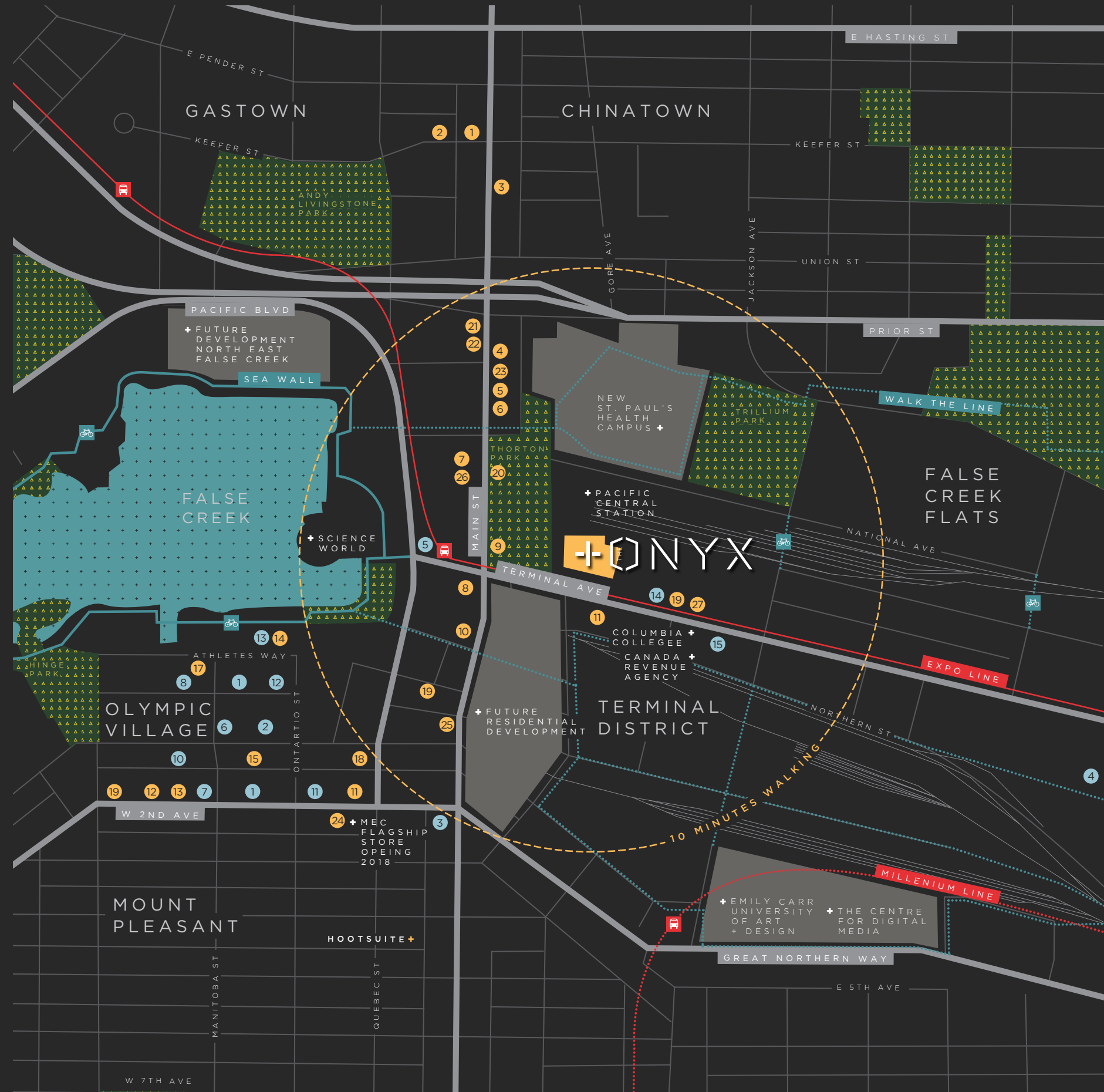
- 1 Juniper
- 2 Bao Bei
- 3 Matchstick
- 4 The American
- 5 Bodega on Main
- 6 Campagnolo
- 7 Subway
- 8 Tim Hortons
- 9 Starbucks
- 10 McDonald's
- 11 Tractor Everyday
- Healthy Foods
- 12 Wild Tale
- 13 Flying Pig
- 14 Tap & Barrel
- 15 Craft Beer Market
- 16 JJ Bean
- 17 Terra Breads
- 18 Mario Gelato
- 19 Dubh Linn Gate
- 20 Torofuku
- 21 Pizzeria Farina
- 22 Boxcar
- 23 Butter Mere Patisserie
- 24 Earnest Ice Cream
- 25 Railtown Cafe
- 26 Kabob Burger
- 27 To Dine For Eatery

RETAIL & SERVICES

- 1 London Drugs
- 2 Urban Fare
- 3 Shell Gas Station
- 4 Home Depot
- 5 VanCity
- 6 TD Bank
- 7 Bank of Montreal
- 8 Legacy Liquor Store
- 9 Scotia Bank
- 10 BMO Theatre Stage
- 11 RBC Bank
- 12 Canada Post
- 13 Creekside Community Centre
- 14 Raincity Athletics
- 15 Long & McQuade

LEDGEND

-  TRANSIT HUBS
-  SKY TRAIN
-  FUTURE SKY TRAIN
-  WALKING + CYCLING PATH
-  FUTURE WALKING + CYCLING PATH



Similar to Seattle's South Lake Union or the Bay area of San Francisco, the Terminal District's energized urban streets and waterside beauty represent the ultimate amenity. All around The Onyx is the full West Coast experience that makes this city so legendary: diverse local and international.



West Coast Style

PADDLEBOARDS & PATIOS
ORGANIC EVERYTHING
DOGS & DRAGON BOATS
SLOW FOOD, FAST FOOD
ONE WORD: SEAWALL



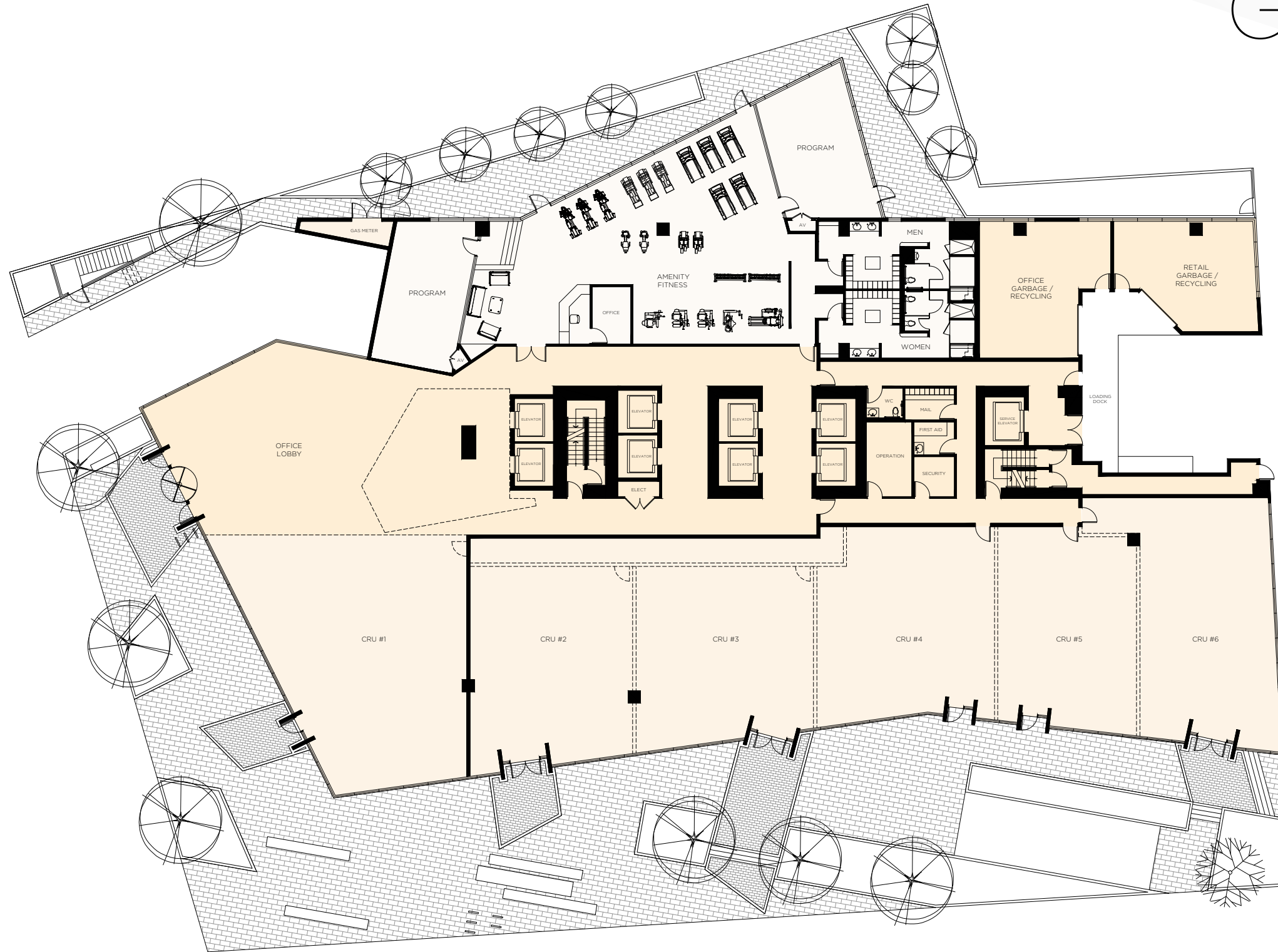


CHANGING PLACE
CHANGING TIME
CHANGING THOUGHTS
CHANGING FUTURE

Project Highlights

- Occupancy Summer 2021
- Southwest Corner of Station Street and Terminal Avenue
- 14 Storeys
- 290,000 sqft of AAA Office Space
- 24,000 sqft Floor Plate
- 12-foot Clear Ceiling Heights
- 96,000 sqft of Retail
- Several Private Outdoor Terraces
- One-Minute Walk to SkyTrain
- Created to LEED Gold
- Parking Ratio 1.64: 1,000 sqft
- Signage Opportunities

GROUND FLOOR



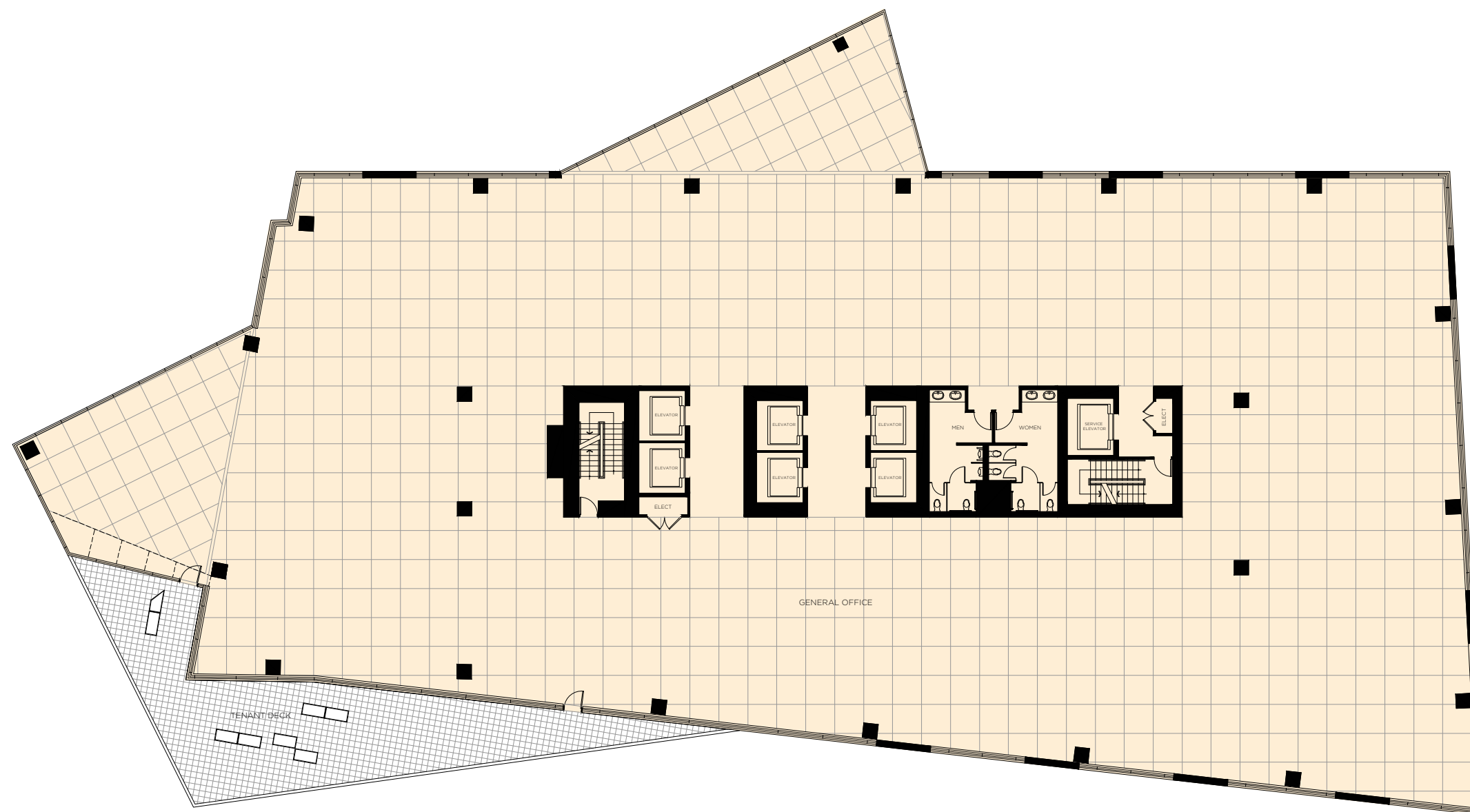
Office – 8,139 sqft
Retail – 9,267 sqft
Fitness – 4,476 sqft

Office ■ Retail ■ Amenity ■

The developer reserves the right to make changes and modifications to the information contained herein without prior notice. Pricing, dimensions, sizes, areas, specifications, layouts and materials are approximate only and subject to change without notice.

LEVEL 5

Office – 22,902 sqft

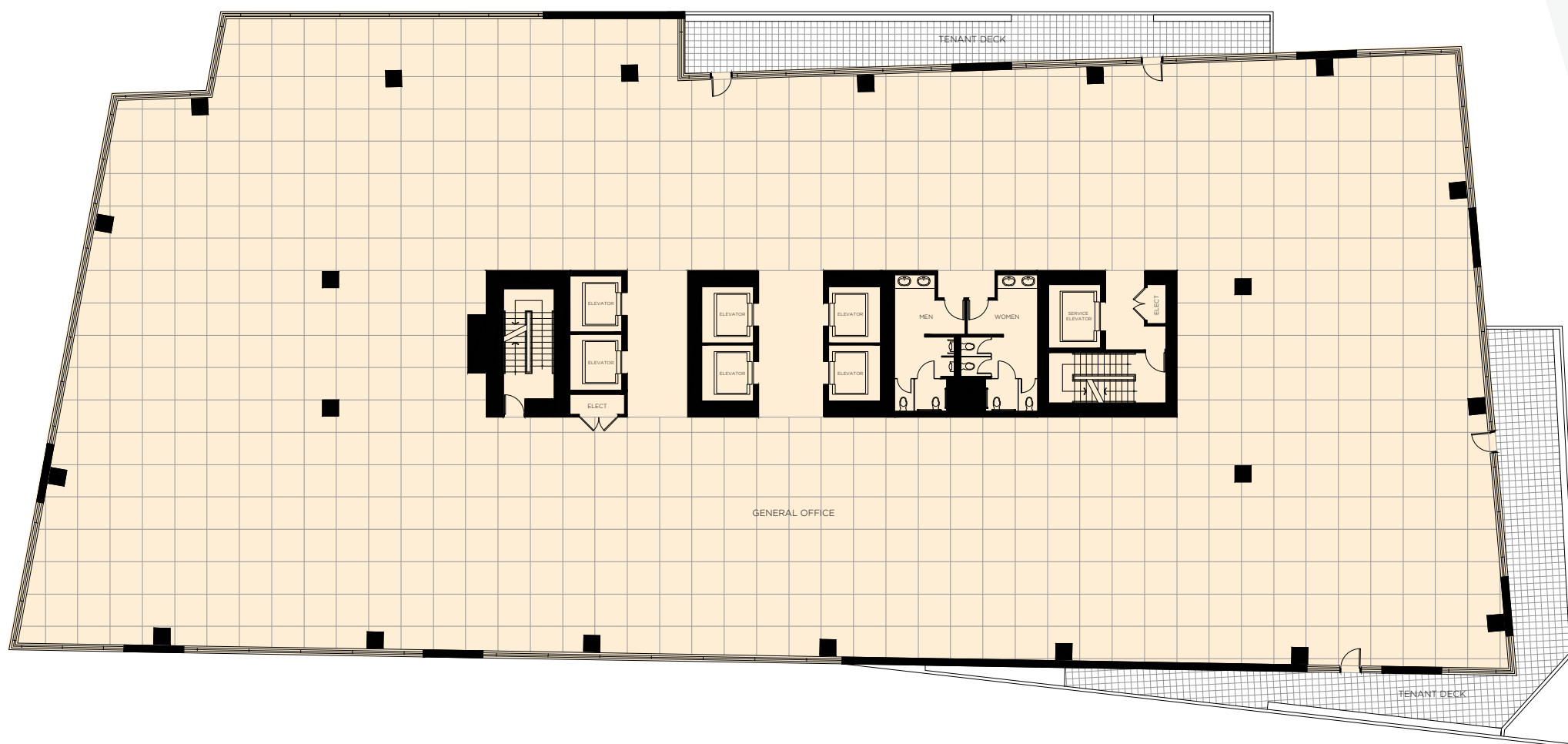


Office ■ Retail ■ Amenity ■

The developer reserves the right to make changes and modifications to the information contained herein without prior notice. Pricing, dimensions, sizes, areas, specifications, layouts and materials are approximate only and subject to change without notice.

LEVEL 9

Office – 21,027 sqft

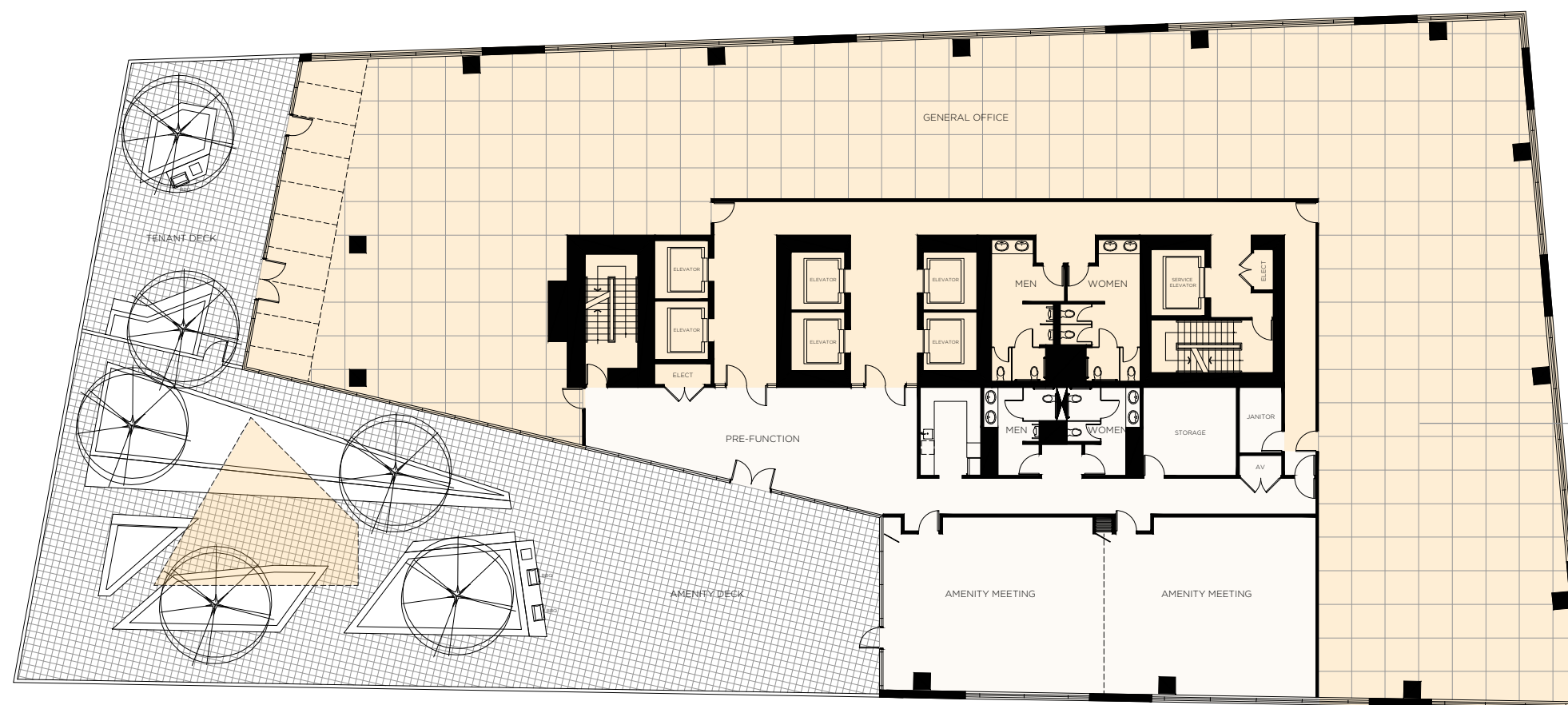


Office ■ Retail ■ Amenity ■

The developer reserves the right to make changes and modifications to the information contained herein without prior notice. Pricing, dimensions, sizes, areas, specifications, layouts and materials are approximate only and subject to change without notice.

LEVEL 13

Office – 12,538 sqft



Office ■ Retail ■ Amenity ■

The developer reserves the right to make changes and modifications to the information contained herein without prior notice. Pricing, dimensions, sizes, areas, specifications, layouts and materials are approximate only and subject to change without notice.

Onyx Team

Rize

We don't design cookie-cutter developments or construct buildings off an assembly-line. Every project is unique. Reflecting and enhancing the personality of the surrounding neighbourhood and the people who live and work there.

But we're not different for the sake of being different. Innovation must also make good economic sense, too. So every creative solution we're passionate about is grounded in practical reality. It's part of our philosophy.

With more than 40 years in the creation of residential and mixed-use properties throughout Greater Vancouver, Rize Alliance's passion goes beyond measurable skills and capabilities. It involves continuous improvement, sustainable growth, positive feedback, openness to inspiration, environmental sensitivity and supporting the communities we live and work in. Always raising our standards.

rize.ca

The Rize logo consists of the word "Rize" in a bold, orange, sans-serif font.

MCM Architects / Musson Cattell Mackey Partnership

Founded in Vancouver in 1965, Musson Cattell Mackey Partnership Architects Designers Planners (MCM) has grown to be one of British Columbia's most respected architectural practices, with an extensive portfolio of complex and acclaimed projects in response to the needs of a loyal and varied clientele. MCM is comprised of a single office, locally based in Vancouver, with over 60 staff including our associate firm MCM Interiors Ltd.

MCM enjoys a history of satisfied users and clients, resulting from a fundamental commitment to the appreciation and integration of client goals and aspirations. The firm's approach as a team player combines a strong design orientation with a depth of solid expertise in programming, master-planning, interior design, functional planning, construction methods, cost control, local code requirements, contract administration, sustainable building, integration of technology, and various methods of project delivery.

mcmparchitects.com



Colliers

Colliers International is an industry-leading real estate services company with a global brand operating in 69 countries and a workforce of more than 15,000 skilled professionals serving clients in the world's most important markets.

With an enterprising culture and significant employee ownership and control, Colliers professionals provide a full range of services to real estate occupiers, owners and investors worldwide. Services include strategic advice and execution for property sales, leasing and finance; global corporate solutions; property, facility and project management; workplace solutions; appraisal, valuation and tax consulting; customized research; and thought leadership consulting.

Colliers has been ranked among the top 100 global outsourcing firms by the International Association of Outsourcing Professionals for 13 consecutive years, more than any other real estate services firm.

collierscanada.com



THEONYYX.COM

Ríze
WWW.RIZE.CA

PIONEER
Investments Ltd.

WWW.PIONEERINVESTCANADA.COM

Colliers
INTERNATIONAL

WWW.COLLIERSCANADA.COM